



2/38 White Street Port Melbourne VIC

9 

This large warehouse office combo located on the city fringe is perfect for any business looking for a large property, with ample parking in a central location.

- * Total Building Area: 505m²
- * Warehouse: 237m²
- * Ground Floor Showroom: 128m²
- * Partitioned Upstairs Office: 140m²
- * Electric Roller Door
- * 3x Showers
- * Board rooms & Open Plan Layouts
- * Heating & Cooling
- * 9 Car Parks
- * Abundance of All Day & 4 Hour Street Parking

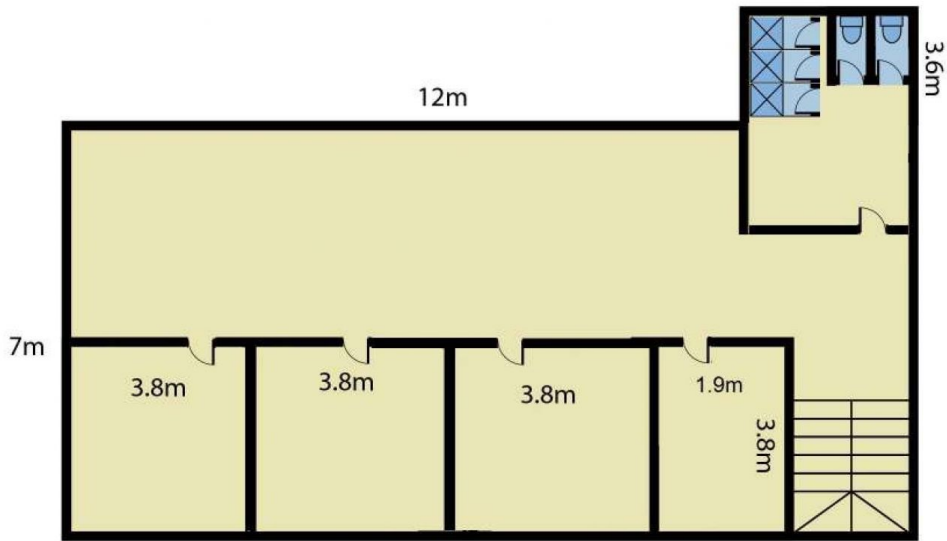
Type : Industrial
Building Size : 505 sqm
View : <https://www.visionrealestate.com.au/lease/vic/inner-city/port-melbourne/commercial/industrial/8152068>



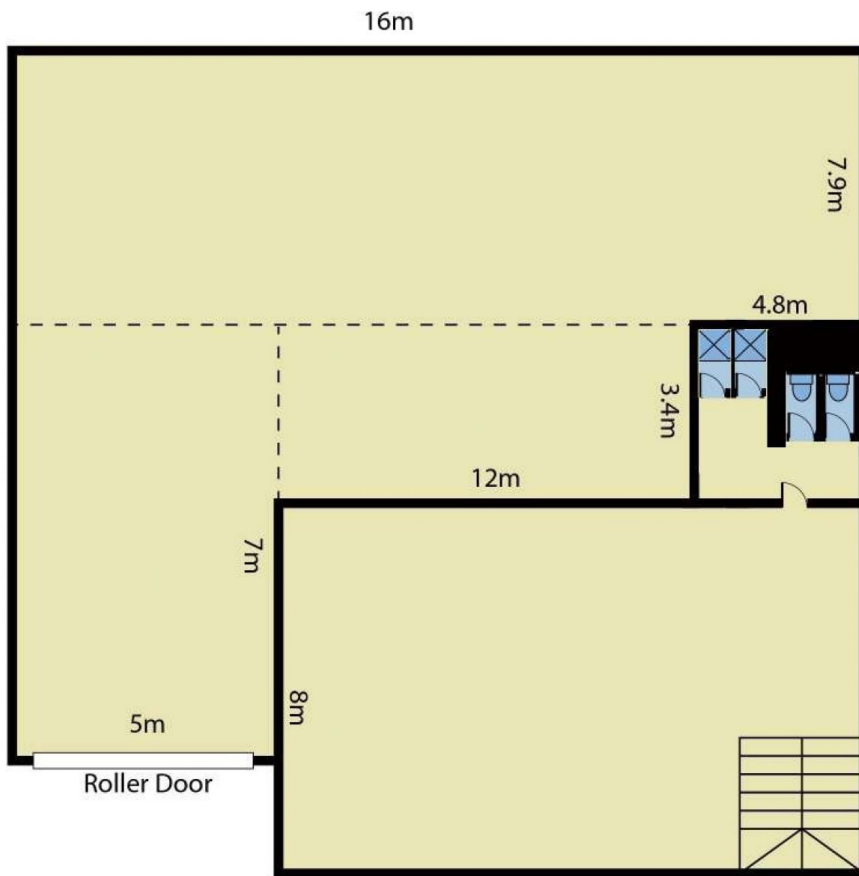
Jamison Tsindos
03 9654 9800

[For full version visit the website](https://www.visionrealestate.com.au)

2/38-42 White Street, South Melbourne



First Floor



16m
Ground Floor

Disclaimer: Whilst we believe the contents of this document to be accurate, we suggest the prospective purchasers make any necessary enquiries to satisfy themselves. We do not accept responsibility for any errors or omissions.