

**1/9 Woolboard Road Port Melbourne VIC**

**3**

- Warehouse: 110m2
- First Floor Office: 50m2
- Heating & Cooling
- Kitchenette
- Amenities
- Electric Roller Door
- Great Location
- High Clearance Warehouse Space
- 3 On Site Car Spaces
- Located within Secure Complex
- Excellent access to CityLink and the West Gate Freeway

**Type** : Industrial  
**Building Size** : 160 sqm  
**View** : <https://www.visionrealestate.com.au/lease/vic/inner-city/port-melbourne/commercial/industrial/7669511>

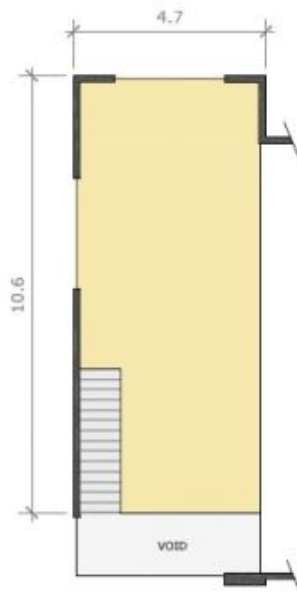
Please contact Jamison on 0430 241 116 to book an inspection



**Jamison Tsindos**  
03 9654 9800



GROUND FLOOR



FIRST FLOOR OFFICE



Information Schedule

Ground Floor	110 m <sup>2</sup>
Office	50 m <sup>2</sup>
<b>Total Area</b>	<b>160 m<sup>2</sup></b>