

10/9 Woolboard Road Port Melbourne VIC

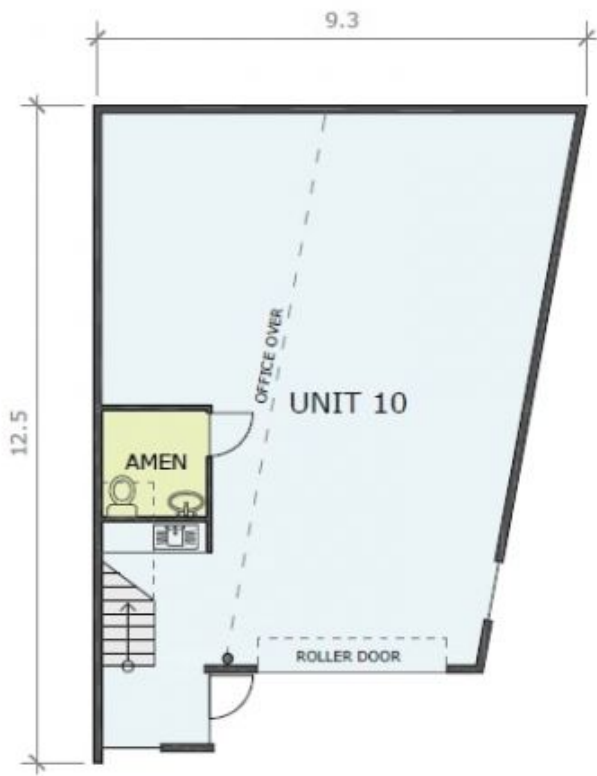
- Warehouse: 92m2
- First Floor Office: 37m2
- Heating & Cooling
- Kitchenette
- Amenities
- Electric Roller Door
- Great Location
- High Clearance Warehouse Space
- 2 On Site Car Spaces
- Located within Secure Complex
- Excellent access to CityLink and the West Gate Freeway

Please contact Jamison on 0430 241 116 to book an inspection.

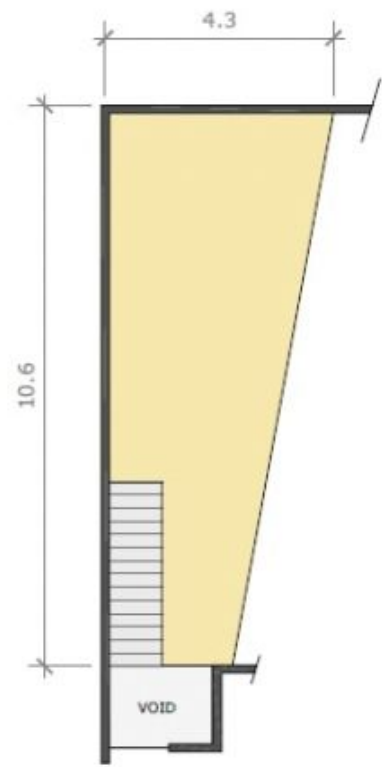
Building Size : 129 sqm
View : <https://www.visionrealestate.com.au/lease/vic/inner-city/port-melbourne/commercial/industrial/7544557>



Jamison Tsindos
03 9654 9800



GROUND FLOOR



FIRST FLOOR OFFICE

Information Schedule

Ground Floor	92 m ²
First Floor	37 m ²
Total Area	129 m²