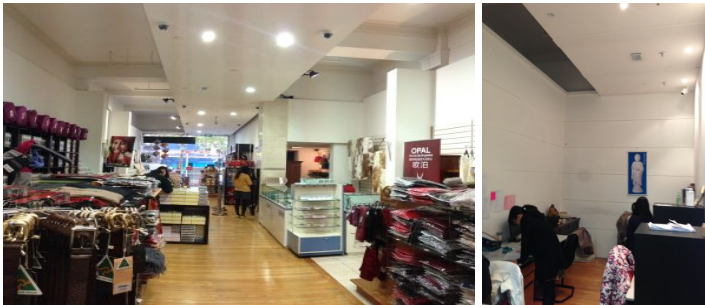


VISION

real estate



165A Bourke Street Melbourne VIC

Vision Real Estate has the pleasure in offering this magnificent shop right in the heart of the CBD. Outstanding retail or food and beverage opportunity located in busy CBD precinct.

Launch your business amongst many established food and beverage cuisines, ranging from fast foods, casual dining to gourmet restaurants.

- *Total Building Area -173 sqm*
- *Glass Fronted Shop.
- *Suite Variety of Retail Uses.
- *Available Now.
- *\$260,250 p.a Gross, plus GST

For further information contact Frank Romeo on 0405 703 470.

Price : \$260,250 p.a Gross, plus GST pa
Building Size : 173 sqm
Land Size : 1 sqm
View : <https://www.visionrealestate.com.au/lease/vic/inner-city/melbourne/commercial/retail/7433383>



Frank Romeo
03 9654 9800

<https://www.visionrealestate.com.au>