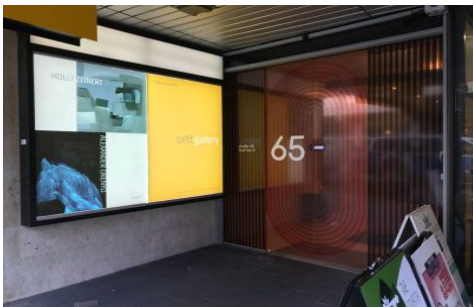


VISION

real estate



65 Murray Street Hobart TAS

- * Office and studio spaces from 10sqm to whole floors of 380sqm.
- * Rent and Lease terms negotiable
- * All outgoings included in rentals
- * Fit out contributions available for whole floors
- * Great views and excellent natural light
- * Located in the heart of the CBD next to Myer

Price : Contact Agent
Building Size : 380 sqm
View : <https://www.visionrealestate.com.au/lease/tas/hobart-southern/hobart/commercial/offices/7433372>

The Landlord is motivated and ready to do deals!

Please call Marty on 0412 055 149 for further information or to arrange an inspection.

<https://www.visionrealestate.com.au>