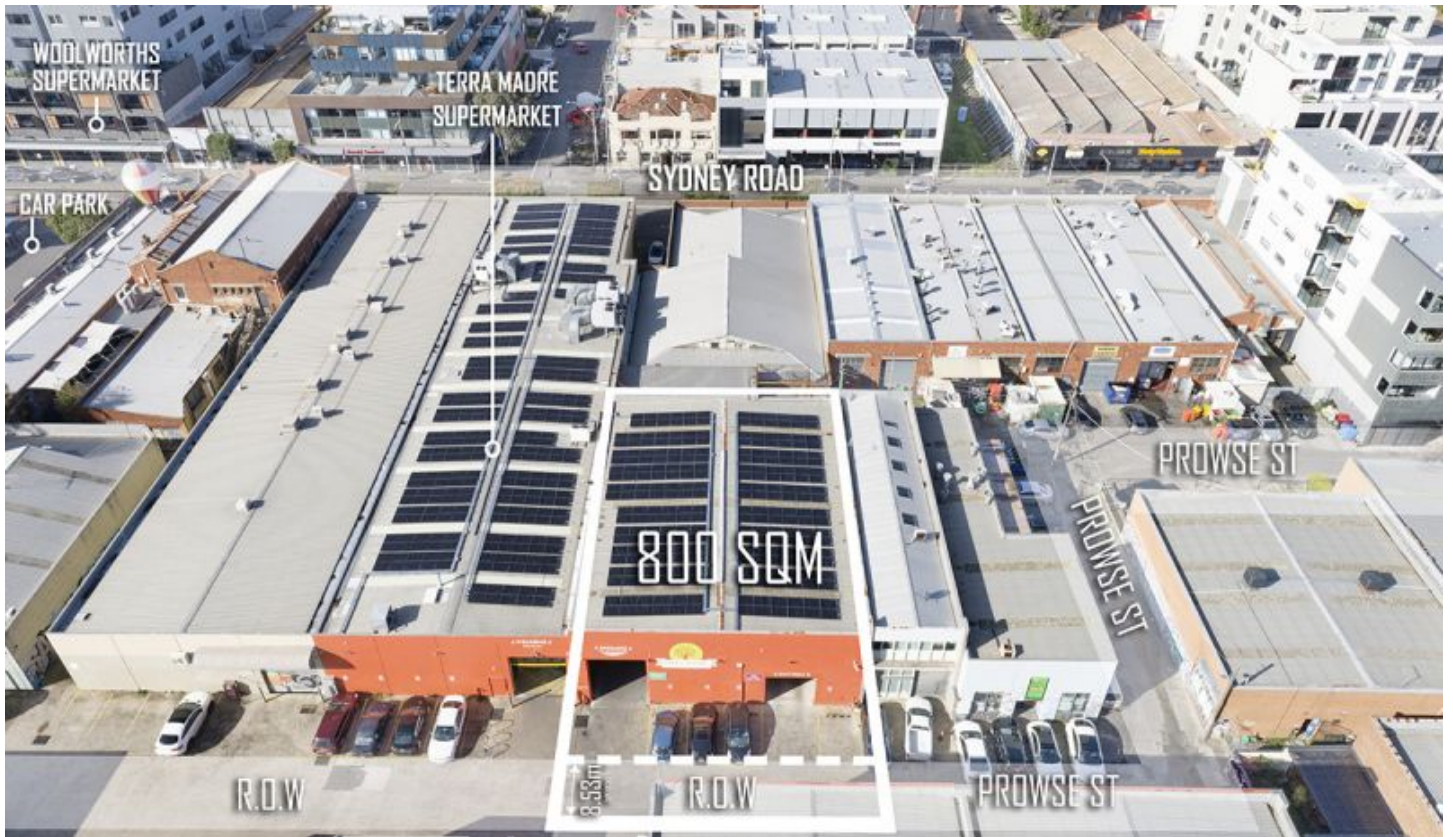


VISION

real estate



8 Prowse Street Brunswick VIC

4 🚗

Key Points

- ? Clear Span Industrial Warehouse
- ? Short Walk To Train Station & Sydney Rd
- ? Within 6.8km* to Melbourne Cbd

Building Size : 520 sqm
Land Size : 800 sqm
View : <https://www.visionrealestate.com.au/sale/vic/north/brunswick/commercial/industrial/7420366>

Vision Real Estate is now pleased to offer to purchase this outstanding Industrial warehouse just off Sydney Rd and within close proximity to Melbourne's CBD.

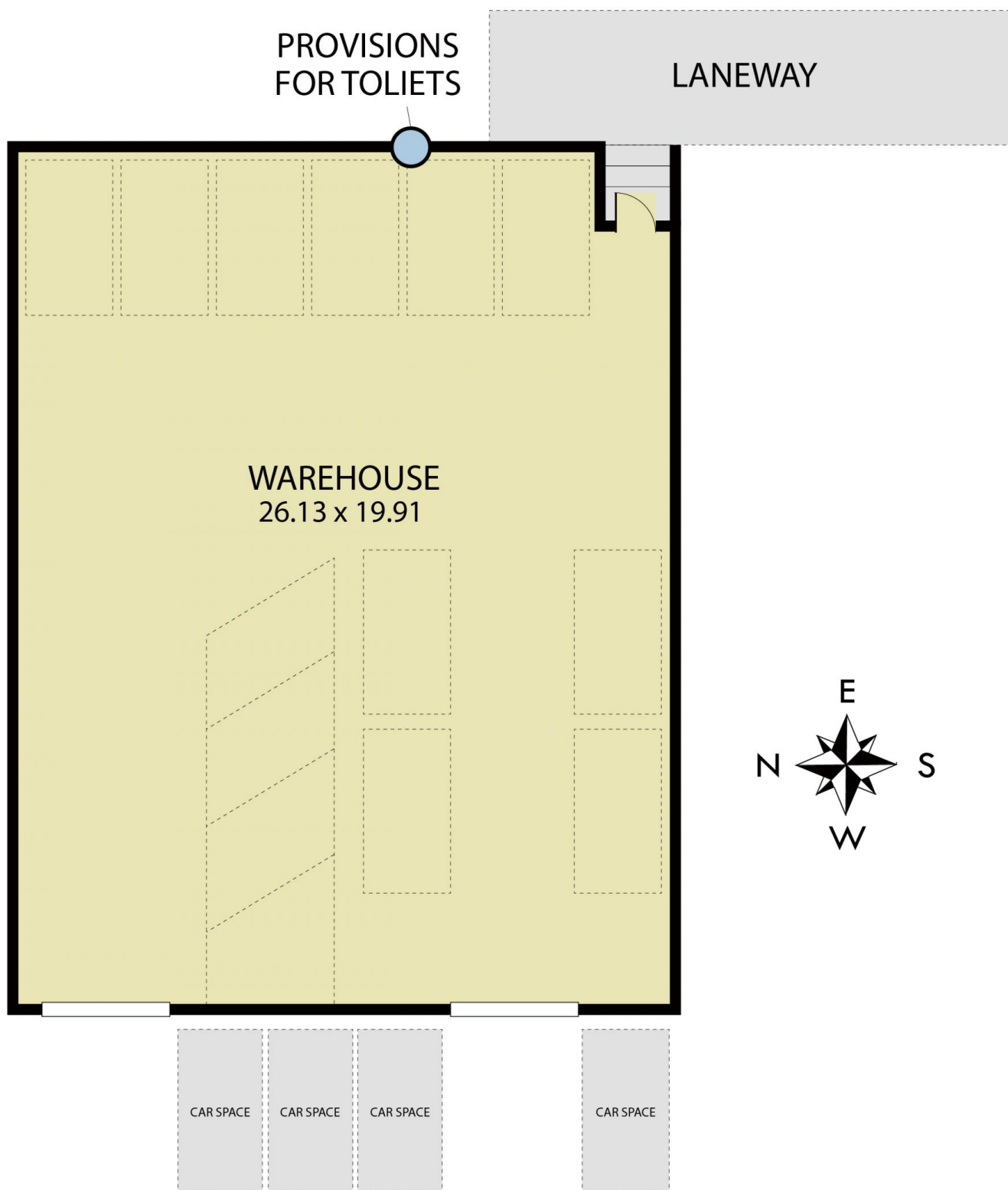
- *Strategic Land Site - 800 sqm*
- *Building Area- 520 sqm*
- *Clear Span Warehouse
- *Additional Rear Right of Way Access
- *Power Supply - 200 AMPS
- *39.6 Kw Solar Panel System



Frank Romeo
03 9654 9800

<https://www.visionrealestate.com.au>

8 Prowse Street, Brunswick



Not To Scale

Disclaimer: Whilst we believe the contents of this document to be accurate, we suggest the prospective purchasers make any necessary enquiries to satisfy themselves. We do not accept responsibility for any errors or omissions.