



140 Gipps Street Abbotsford VIC

2

Prime opportunity to get into this very tightly held area only metres from the Collingwood border and within close proximity to the CBD and Hoddle St.

- *Strategic Site- 289 sqm*
- *Building Area- 240 sqm*
- *Huge Development Upside.
- *Commercial 2 Zone
- *Abutting Public Car Park.
- *Adjacent to Collingwood Train Station
- *Easy Access to Hoddle St.

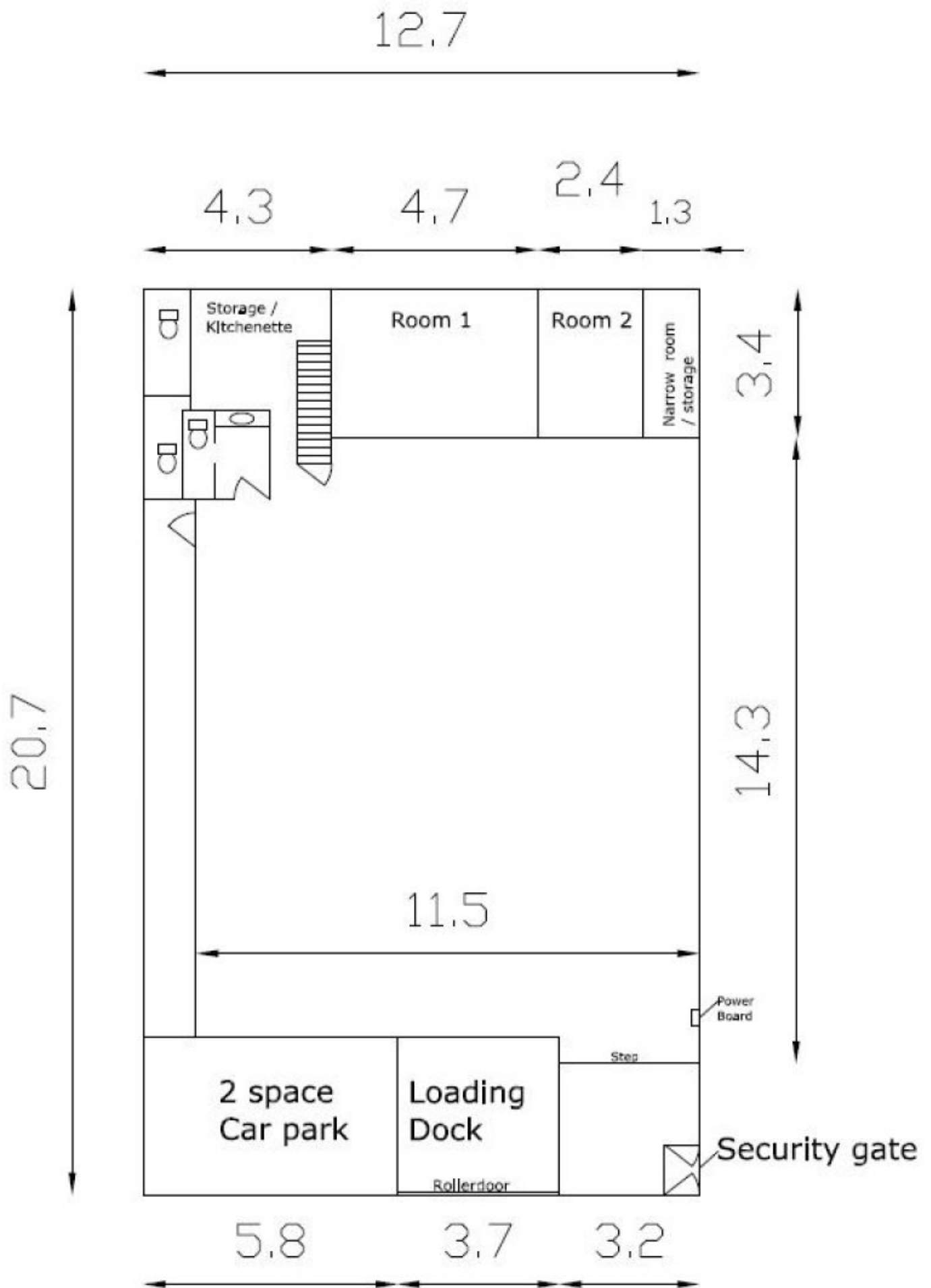
Building Size : 240 sqm
Land Size : 289 sqm
View : <https://www.visionrealestate.com.au/sale/vic/inner-city/abbotsford/commercial/industrial/7420334>

For further information contact Frank Romeo on 0405 703 470 or frank@visionrealestate.com.au

*approx



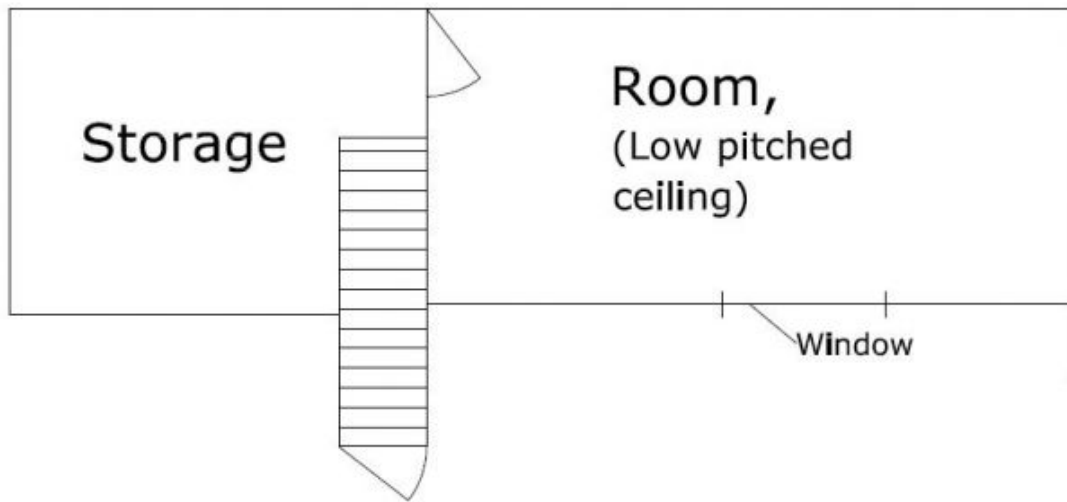
Frank Romeo
03 9654 9800



Mezzanine floor

3,8

5,9



2,7

