



227 Murrumbeena Road Murrumbeena VIC

SALE STATISTICS

Sale price: \$1,165,000 + GST
 Land rate: \$2,787 per square metre
 Building rate: \$3,329 per square metre

Type : Retail
Building Size : 350 sqm
Land Size : 418 sqm
View : <https://www.visionrealestate.com.au/sale/vic/east/murrumbeena/commercial/retail/7420310>

The end of an era! A nostalgia buy of what was one of Melbourne's last video stores to have closed.

Properties of this size and layout are a rare offering in Murrumbeena. With vacant possession, the opportunities are endless.

PROPERTY OVERVIEW

* Total land area: 418m²
 * Total building area: 350m²

[For full version visit the website](https://www.visionrealestate.com.au)

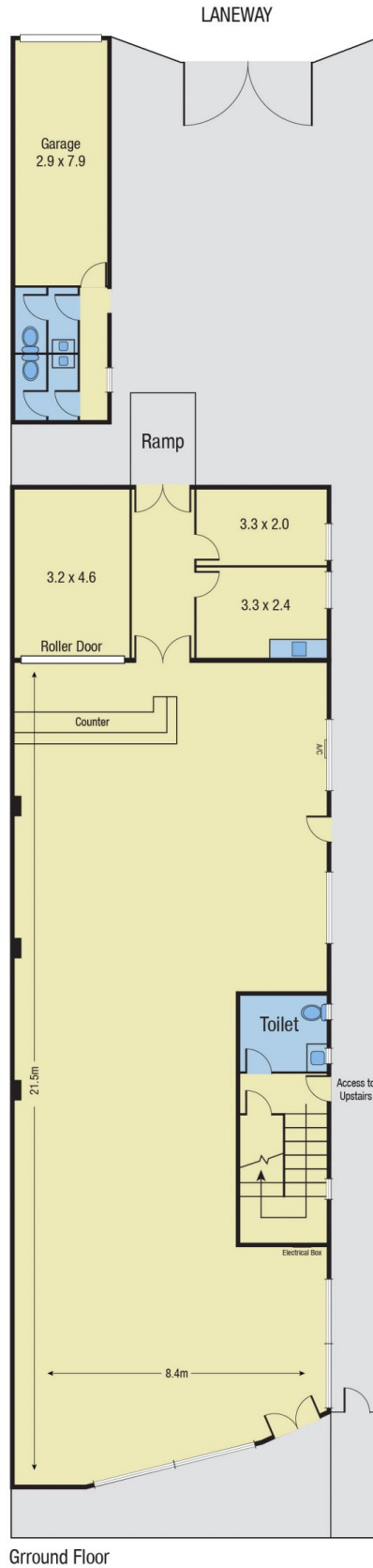
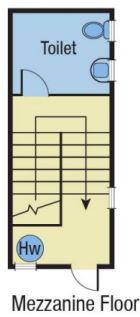
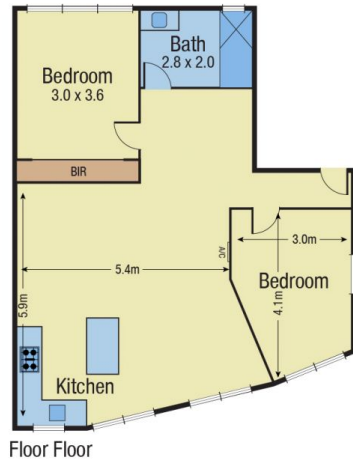


James Doherty
0401221318



Tim Bindley
03 9654 9800

227 Murrumbeena Road, Murrumbeena



Not to Scale

Disclaimer: Every precaution has been taken to verify the accuracy of the above details. However, prospective purchasers are advised to make their own enquiries. We do not accept responsibility for any errors or omissions.