

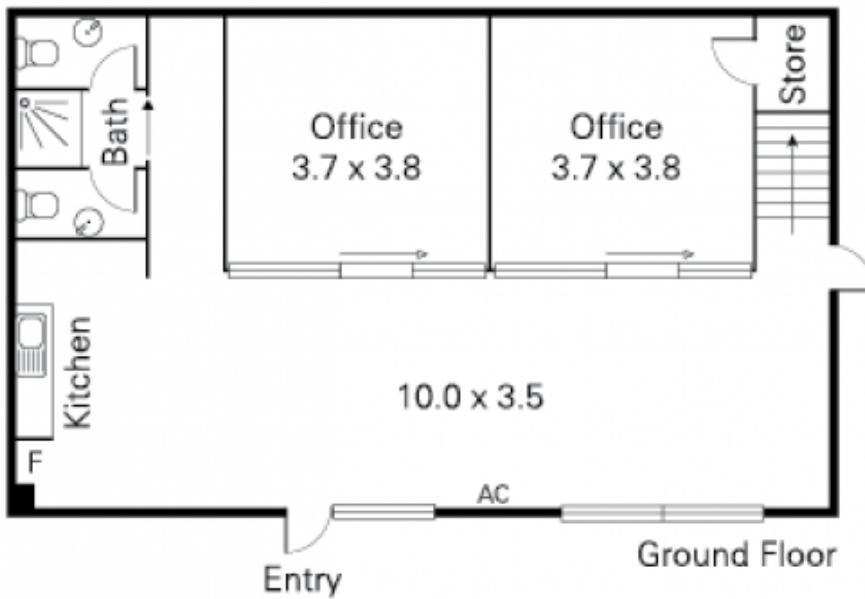
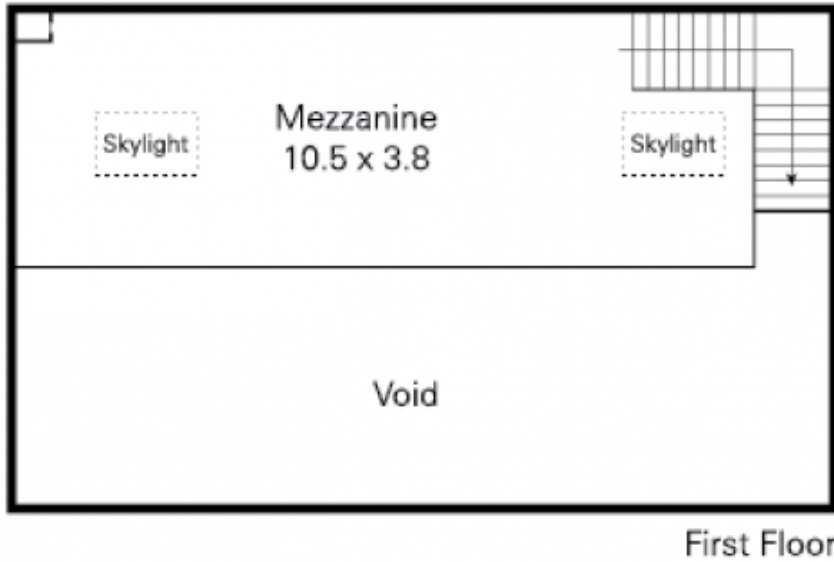
Suite 2/6-8 Bromham Place RICHMOND VIC

Located in Bromham Place Richmond just off Church Street, this fully fitted self contained office suite is ideal for an owner occupier.

- * Building area 120 Sq Mtrs
- * Fully Air- Conditioned
- * M & F Amenities plus shower
- * New Kitchenette
- * On Site Parking

Type : Offices
Building Size : 120 sqm
View : <https://www.visionrealestate.com.au/sale/vic/inner-city/richmond/commercial/offices/7420239>

For inspection contact Chris Barson 0418 327 631



This plan has been prepared for marketing purposes only. Please note that all measurements & angles are approximate only, so it is strongly advised that all interested parties should undertake their own investigation into the accuracy of the supplied information.

No representations or warranties of any nature whatsoever are given or intended.