

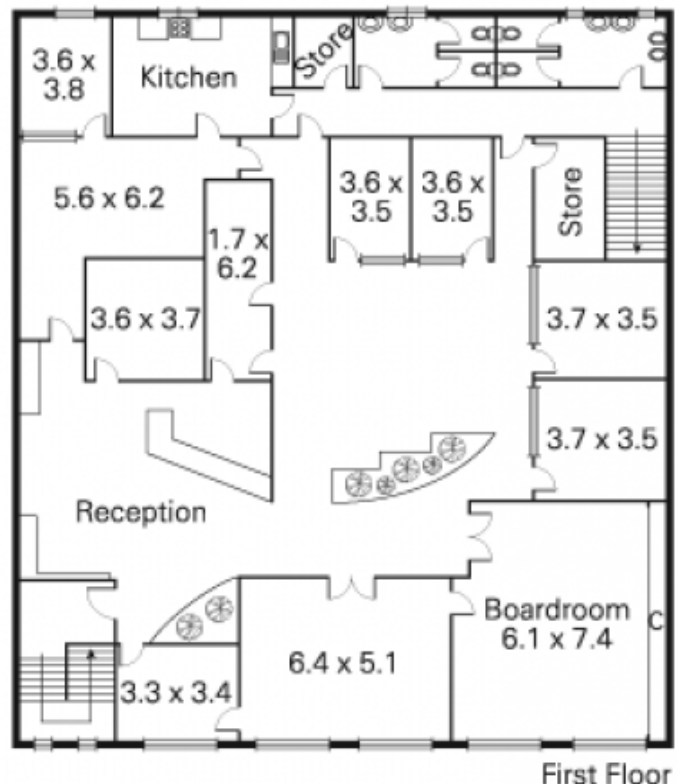
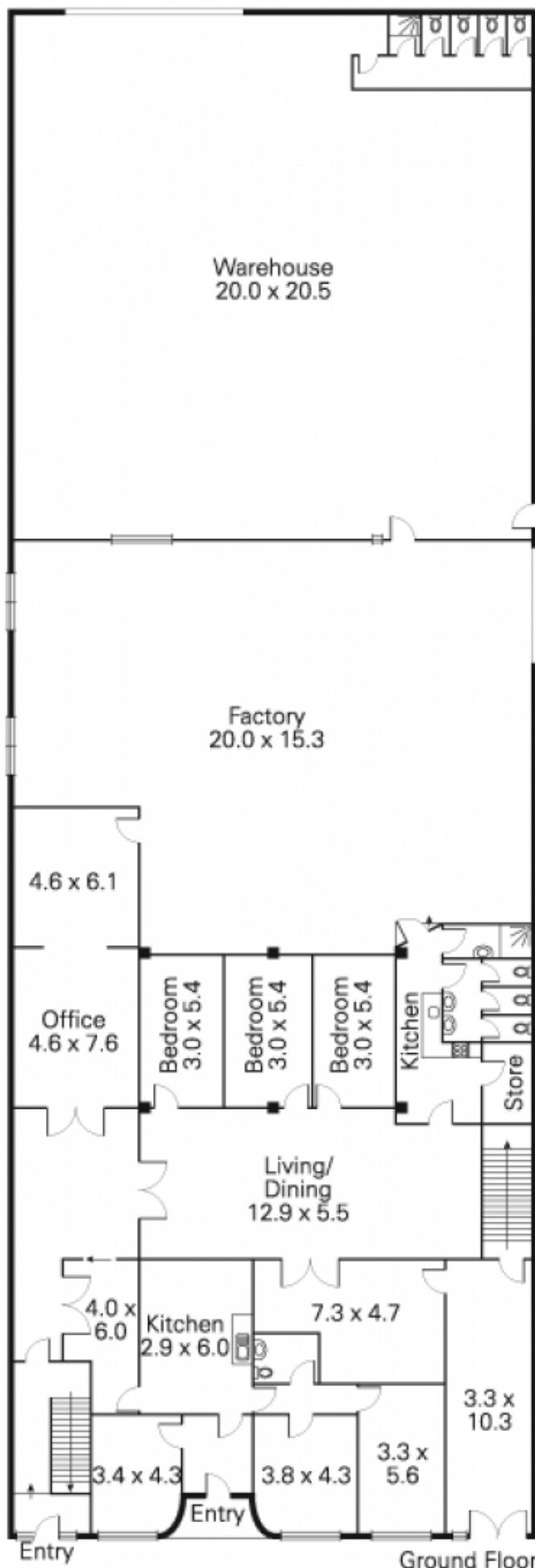
52 HOLMES Street BRUNSWICK VIC

- *1580SQM- total building area.
- *1275SQM- total land area.
- *Two titles, two buildings.
- *Potential return of \$118,092.00 p.a. Gross, plus GST
- *20 metre frontage to Holmes Street.
- *Rear laneway access

Type	: Retail
Building Size	: 1580 sqm
Land Size	: 1275 sqm
View	: https://www.visionrealestate.com.au/sale/vic/north/brunswick/commercial/retail/7420185



Frank Romeo
03 9654 9800



This plan has been prepared for marketing purposes only. Please note that all measurements & angles are approximate only, so it is strongly advised that all interested parties should undertake their own investigation into the accuracy of the supplied information.

No representations or warranties of any nature whatsoever are given or intended.