



73 Nicholson Street ABBOTSFORD VIC

- * Lucrative "Add Value" Opportunity with plans and permits
- * Potential Building Area of 915sqm approx.
- * Long Settlement Available

Located adjacent to the successful St Josephs residential Development, this historic building with its corner location and stunning period features offers an unprecedented opportunity to develop as per the current planning permit into 6 huge apartments or resubmit the plans for higher or lower density or simply refurbish and occupy one of the areas finest buildings.

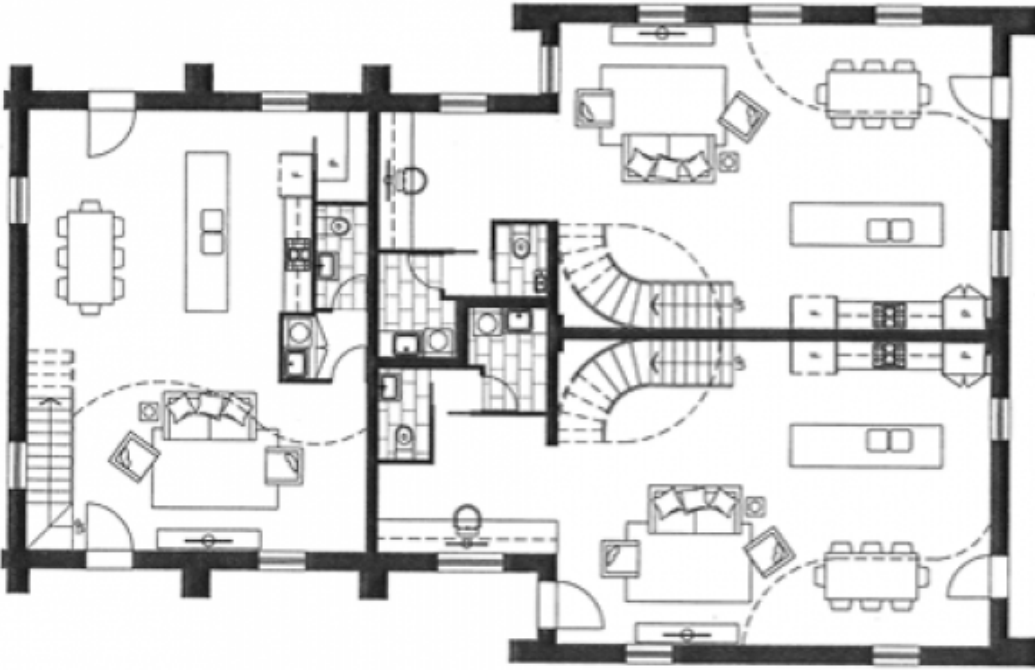
There are 9 secure car spaces included in the sale.

[For full version visit the website](https://www.visionrealestate.com.au)

Type : Development
Building Size : 518 sqm
Land Size : 347 sqm
View : <https://www.visionrealestate.com.au/sale/vic/inner-city/abbotsford/commercial/development/7420184>

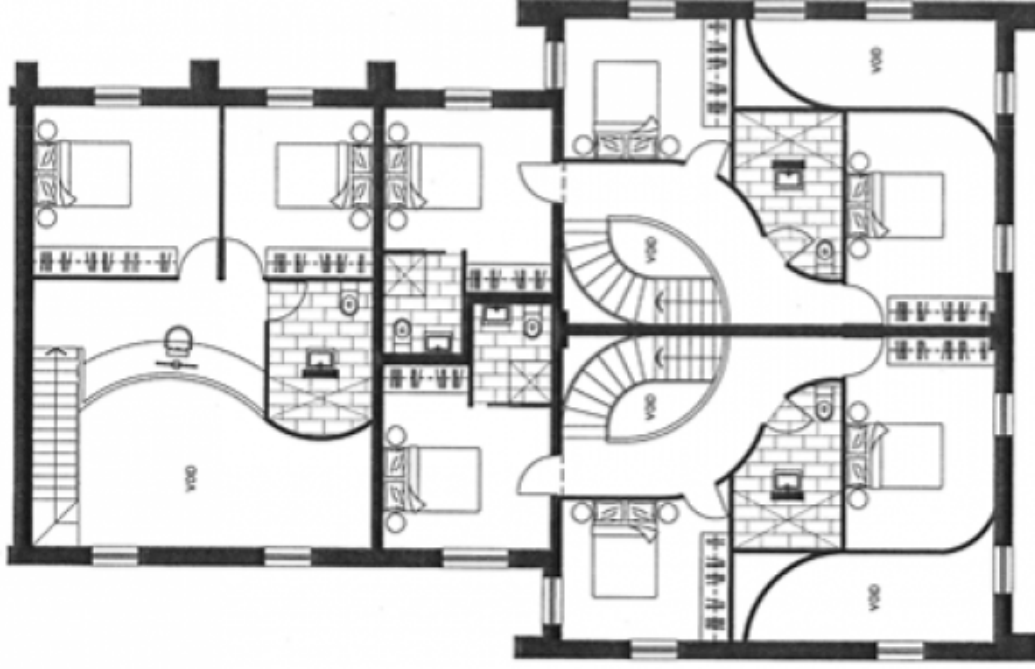


Tim Bindley
03 9654 9800



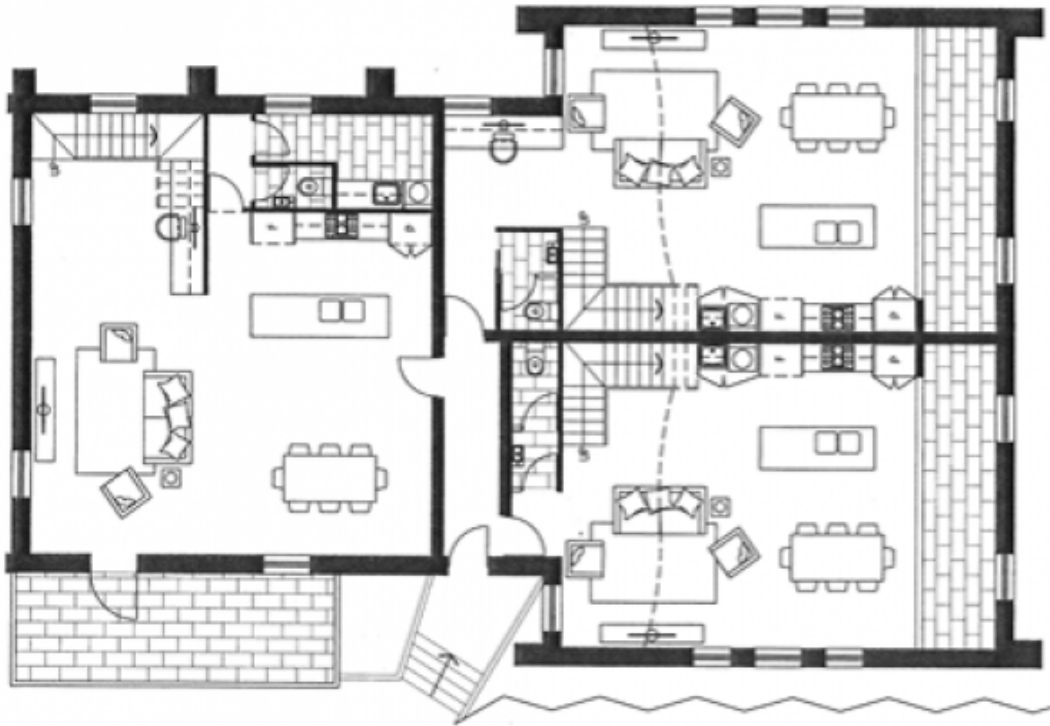
GROUND FLOOR PLAN

0 1m 2m 3m 4m 5m 6m 
 Note: All measurements, areas and scales are approximate only



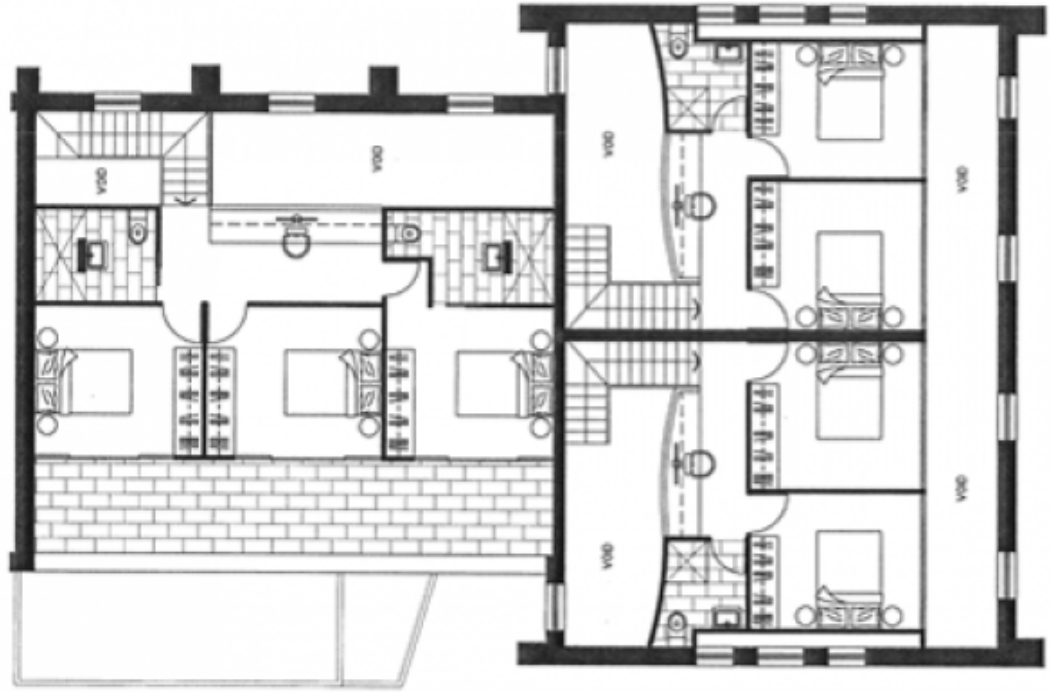
MEZZANINE LEVEL

S t J O S E P H



FIRST FLOOR PLAN

0 1m 2m 3m 4m 5m
 Note: all measurements, areas and scales are approximate only



MEZZANINE LEVEL

S t J O S E P H