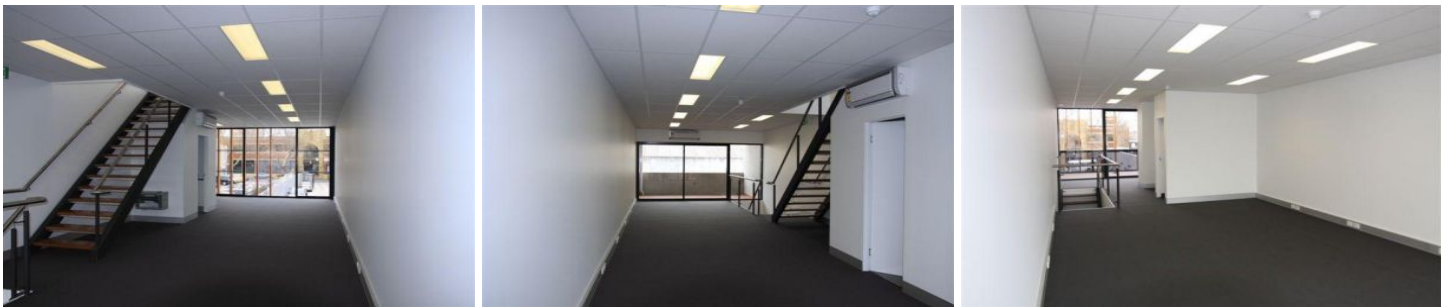


VISION

real estate



40 Glasshouse Road COLLINGWOOD VIC

- * located in the Heart of Collingwood
- * Modern Three Level Office Showroom
- * Total Building Area 250 sqm approx
- * Fully Heated & Air Conditioned
- * Rear Lane access with Roller Door
- * North and West facing balconies
- * Close Hoddle and Smith Street
- * Leased at \$45k pa plus GST and outgoings

Type : Offices
Building Size : 250 sqm
View : <https://www.visionrealestate.com.au/sale/vic/inner-city/collingwood/commercial/offices/7420139>