



27a Cameron Street Brunswick VIC

2 

Vision Real Estate is delighted to offer this City Fringe Office and Warehouse which is ideally positioned in Brunswick's Industrial Zone.

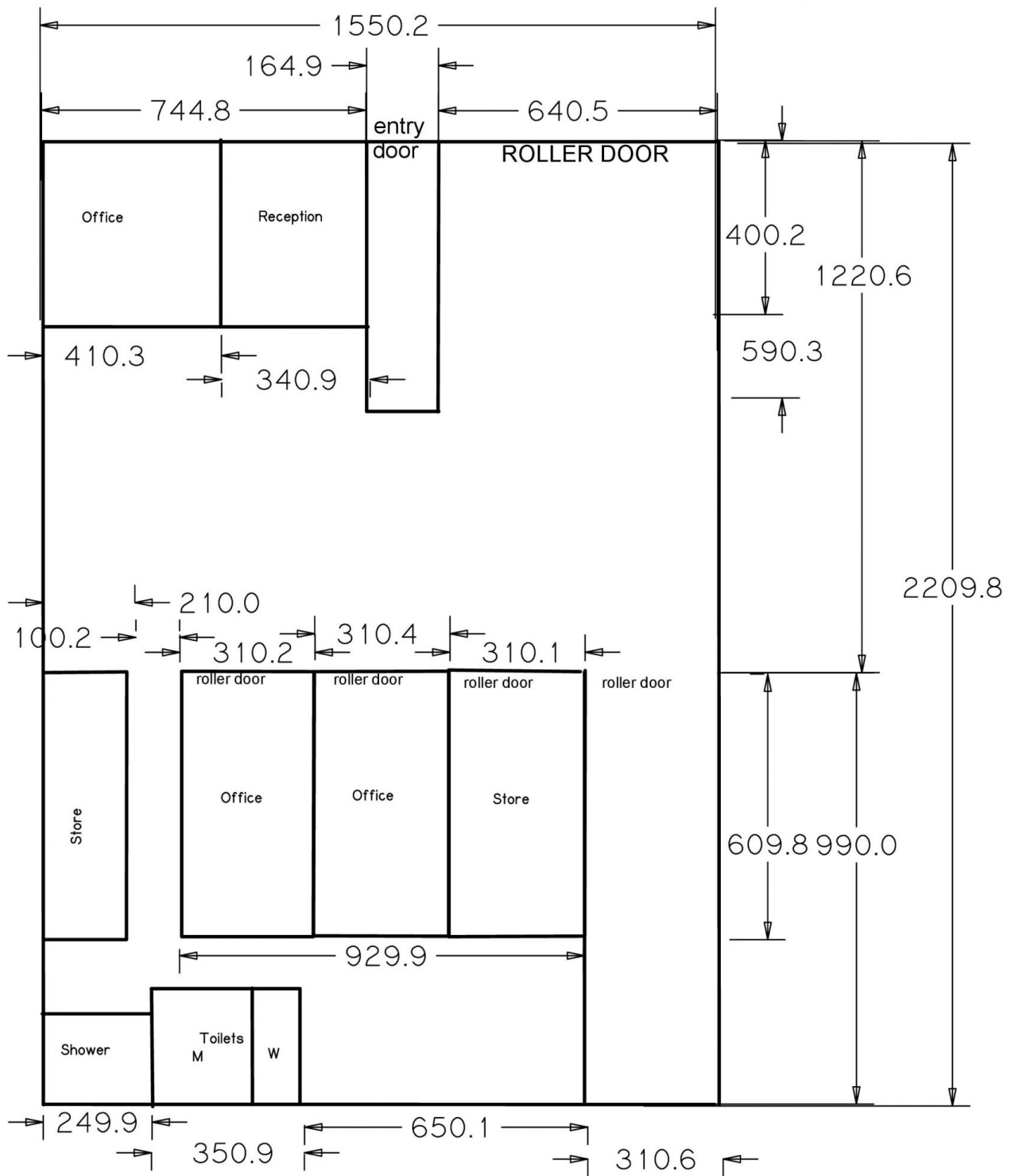
- *Total building area of 390 sqm* which includes 55 sqm of first floor office.
- *Land area- 375 SQM*
- *Bathroom with shower.
- *Ground floor storage units .
- *Mezzanine providing valuable extra storage space.
- *Rare Brunswick Industrial 1 zone..
- *Adjacent to public car park.
- *Short walk to Sydney Rd Woolworths, shops and cafes.
- *Easy access to Anstey and Moreland Train station.

Type : Industrial
Building Size : 390 sqm
Land Size : 400 sqm
View : <https://www.visionrealestate.com.au/lease/vic/north/brunswick/commercial/industrial/7419961>



Frank Romeo
03 9654 9800

[For full version visit the website](https://www.visionrealestate.com.au)



FIRST FLOOR

