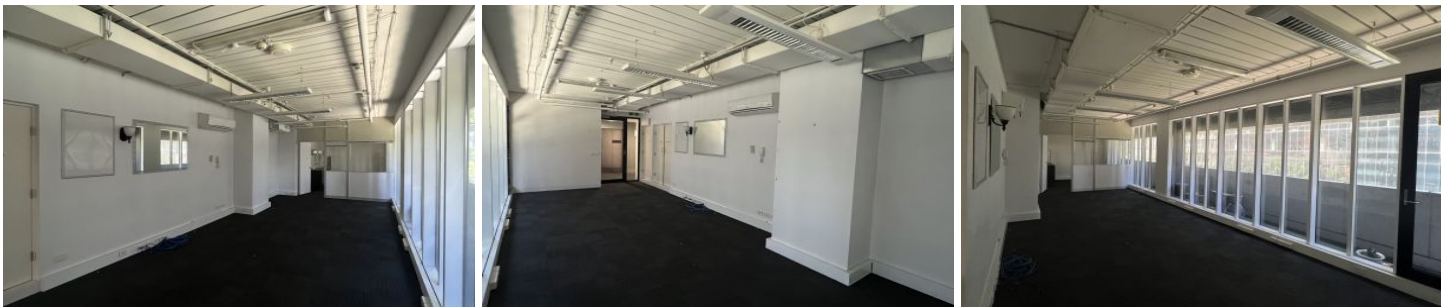


VISION

real estate



Level 6/601/580 Collins Street Melbourne VIC

- * Total Floor Area: 46m²
- * Heating & cooling
- * Network cabling
- * Private kitchenette
- * Balcony overlooking Collins Street
- * Short walk to Southern Cross Station
- * Tram stop at your front door
- * AVAILABLE NOW!!
- * Call to book a private inspection time

Type : Offices
Building Size : 46 sqm
View : <https://www.visionrealestate.com.au/lease/vic/inner-city/melbourne/commercial/offices/7413865>



Jamison Tsindos
03 9654 9800